



Don't touch this: Wood heater burns prevention

Ms Rebecca Schrale¹, Ms Yvonne Echaburu¹ *Tasmanian Burns Unit Royal Hobart Hospital, Hobart, Australia*



Tasmania
Fire Service

TASMANIAN
HEALTH
SERVICE



Introduction

The Burns Registry of Australia and New Zealand (BRANZ) Annual report (2015-2016) clearly demonstrates that children aged 13-24 months represent 30% of all paediatric burn admissions. Contact burns continue to be the second most common type of burn injury in this age group.

Wood heater related injuries have continued to increase across Tasmania. Data extracted from BRANZ show that the Tasmanian Burns Unit at the Royal Hobart Hospital treated a total of 48 injuries related to heating sources in the home in 2016. 70% of these injuries were wood-heater contact burns, 59% of which were paediatric.

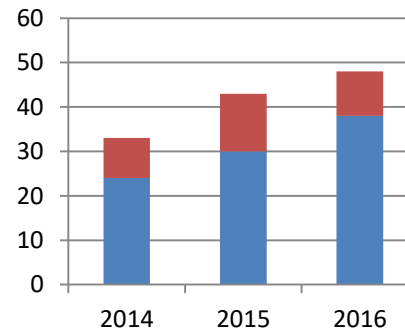
Objectives

- A decrease in the number and severity of wood heater related burn injuries
- An increase in appropriate and timely first aid management of a burn injury
- Increased communication and education through the Burns Unit, Child Health and Parenting Services (CHaPS) and the Tasmania Fire Service (TFS)
- Delivery of a consistent First aid and prevention message across the state for children aged 6 months and older, prior to children actively becoming mobile in the family environment
- Education of the family unit in regards to safety in the home and the Burn First Aid message
- A long term resource that is available within Tasmania that can be utilised nationally

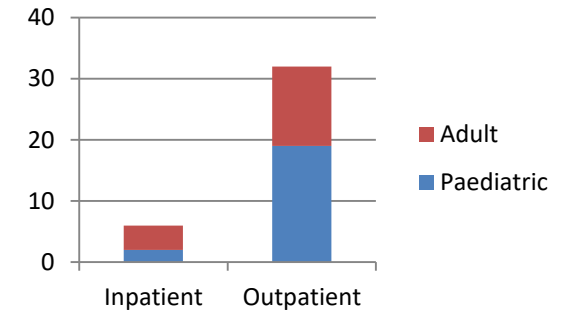
Prevention Campaign

The state-wide initiative was developed in collaboration with the TFS and CHaPS:

- planned state-wide media release
- education to all CHaPS nursing staff on burns prevention and first aid
- distribution of posters, brochures and our 'Cool for 20' magnets to over 4,000 families through their local CHaPS Centre at the 6 month Child Health check, prior to the child becoming mobile through crawling, standing and walking.



Heater related injuries: inpatient & outpatient

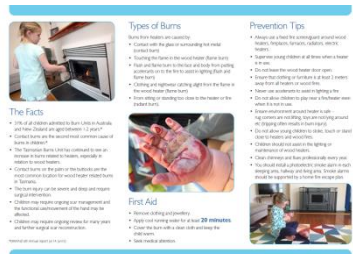


Wood heater related injuries 2016

Conclusion

The Tasmanian Burns Unit will evaluate the campaign in 2018 and plan to focus on prevention of wood heater related injuries within the older population, specifically looking at Grandparents providing child care in the home environment.

The initiative has kindly been supported by the Clipsal Community Grant provided through the Julian Burton Burns Trust.



COMMUNITY GRANTS PROGRAM

